

A parceira que sua empresa pode confiar!



Cienci
Soluções Inteligentes

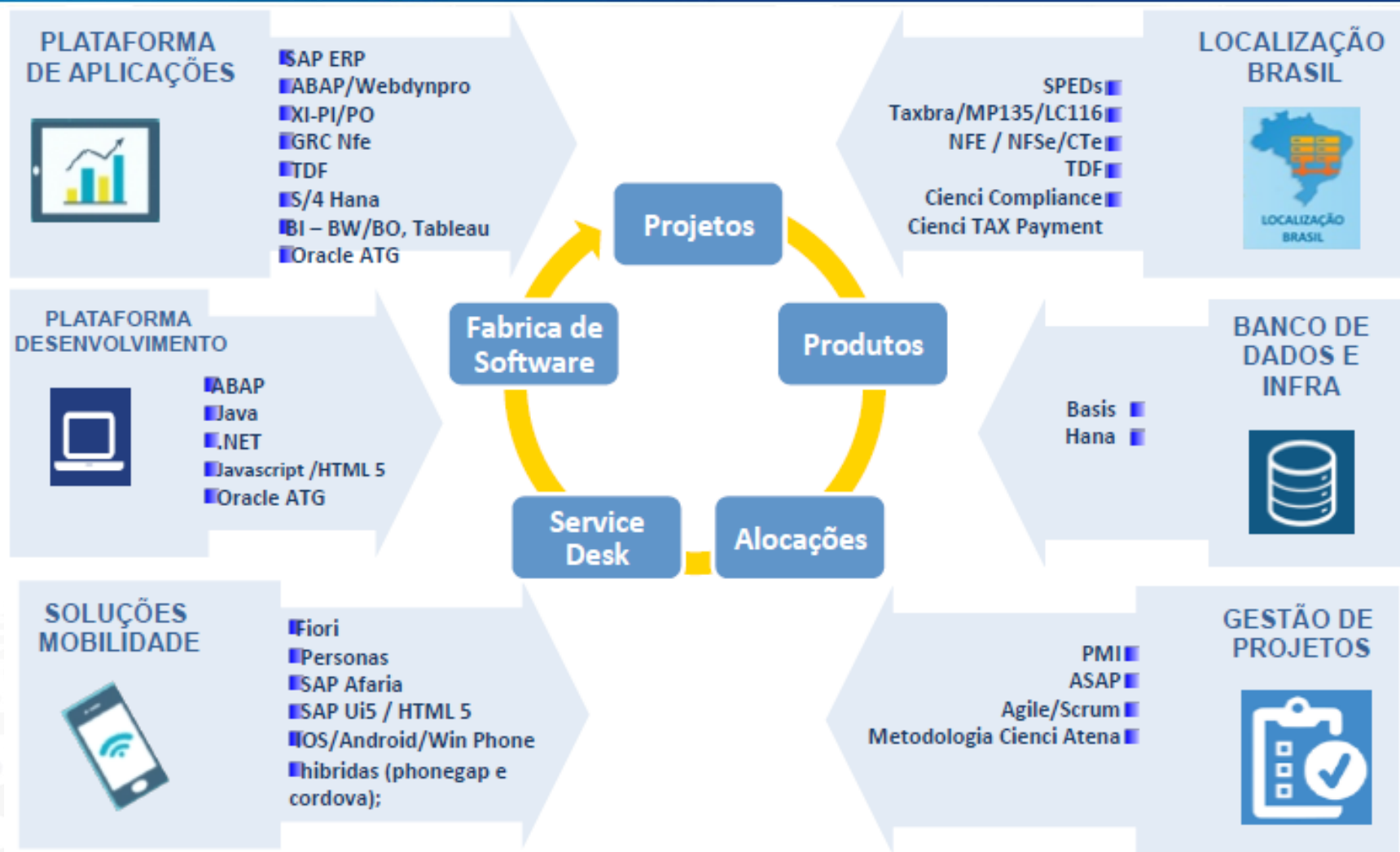


Quem Somos

- A **Cienci Soluções Inteligentes** é especializada em sistemas corporativos **SAP**, atua na implementação, desenvolvimento, manutenção e suporte pós-implementação das soluções **SAP e Multiplataforma**.
- Possui áreas específicas com foco em **ECC (ERP)**, **GRC NF-e** (Inbound e Outbound), **NFSe SAP** (inbound e Outbound), **Integração com Netweaver PI**, **Mobilidade** (Fiori, Afaria, SMP), **SAP BPM com Ui5** e áreas de **Suporte Funcional e Técnico** em ECC, GRC NFe/NFSe e Fábrica de ABAP.
- Possuímos uma área **Multiplataforma** com foco em desenvolvimentos JAVA, HTML5, .NET e Consultoria e Desenvolvimento em Oracle ATG (WebCommerce) e OSB.
- Somos uma Consultoria com compromisso em atender com amplitude as necessidades dos clientes, com princípio básico da “Excelência”, preza por qualidade e pontualidade, utiliza-se de ética e respeito com os parceiros, conta com colaboradores altamente capacitados e incentivados a acompanhar as constantes evoluções tecnológicas do mercado.
- A **Cienci Soluções Inteligentes** está presente no mercado desde 2007, proporcionando aos seus clientes soluções inteligentes e a Excelência no atendimento e relacionamento com seus Clientes, Colaboradores e Parceiros.



Portfólio de Soluções Cienci



Strong IT - Empresa do Grupo Cienci

- A **Strong IT Consulting** está presente no mercado desde 2001, e atualmente desde 2011 com foco na prestação de serviços para plataforma SAP HCM (Human Capital Management) incluindo projetos de implementação, melhorias, suporte presencial e remoto, além da fábrica de Desenvolvimento SAP HCM.

NOSSAS SOLUÇÕES



CORE RH E FOLHA DE PAGAMENTO

Otimize as operações de RH e da folha de pagamento na nuvem
Consolide as operações...

[VISUALIZAR](#)



GESTÃO DE TALENTOS

Atraia, desenvolva e retenha o talento certo para sua empresa
Melhore o envolvimento dos colaboradores...

[VISUALIZAR](#)



GESTÃO DE TEMPO E PRESENÇA

Fale Conosco...

[VISUALIZAR](#)



PLANEJAMENTO E ANÁLISE DA FORÇA DE TRABALHO

Análise do capital humano Otimize a agilidade e os resultados dos negócios com as funções...

[VISUALIZAR](#)

SAP Fiori

Customer





The world is changing

Consumer user
experience is
the new standard

Introducing SAP Fiori



SAP Fiori is our **new user experience** that applies **modern design principles**, providing a role-based experience across all lines of business, tasks and devices.

SAP Fiori enables a holistic and consistent user experiences that is **personalized, responsive and simple**.

It boosts **user productivity and satisfaction** – and helps users always get the job done simpler.



Cienci
Soluções Inteligentes

SAP Fiori UX NEW FACE OF SAP

Concept



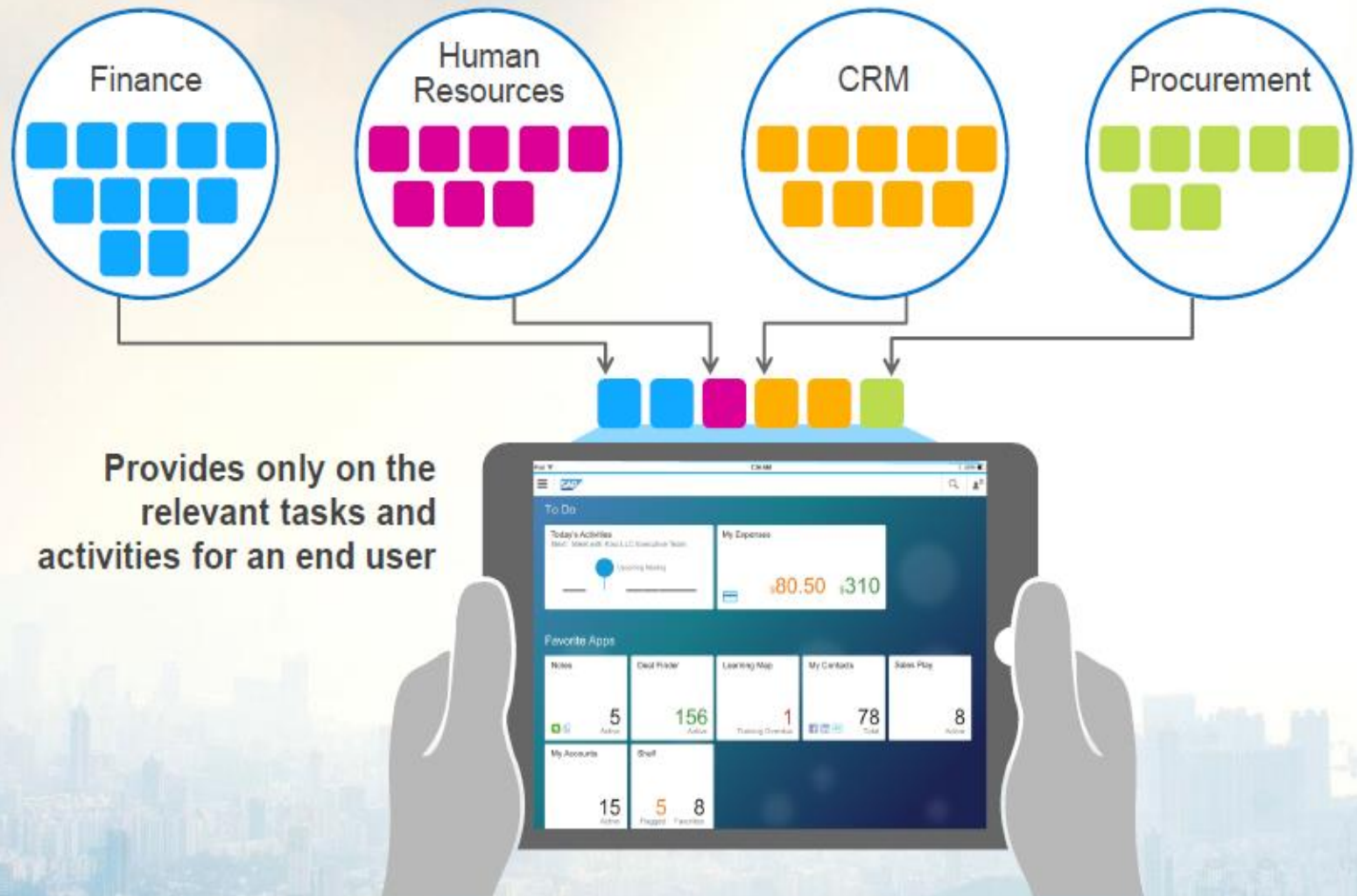
Design



Technology

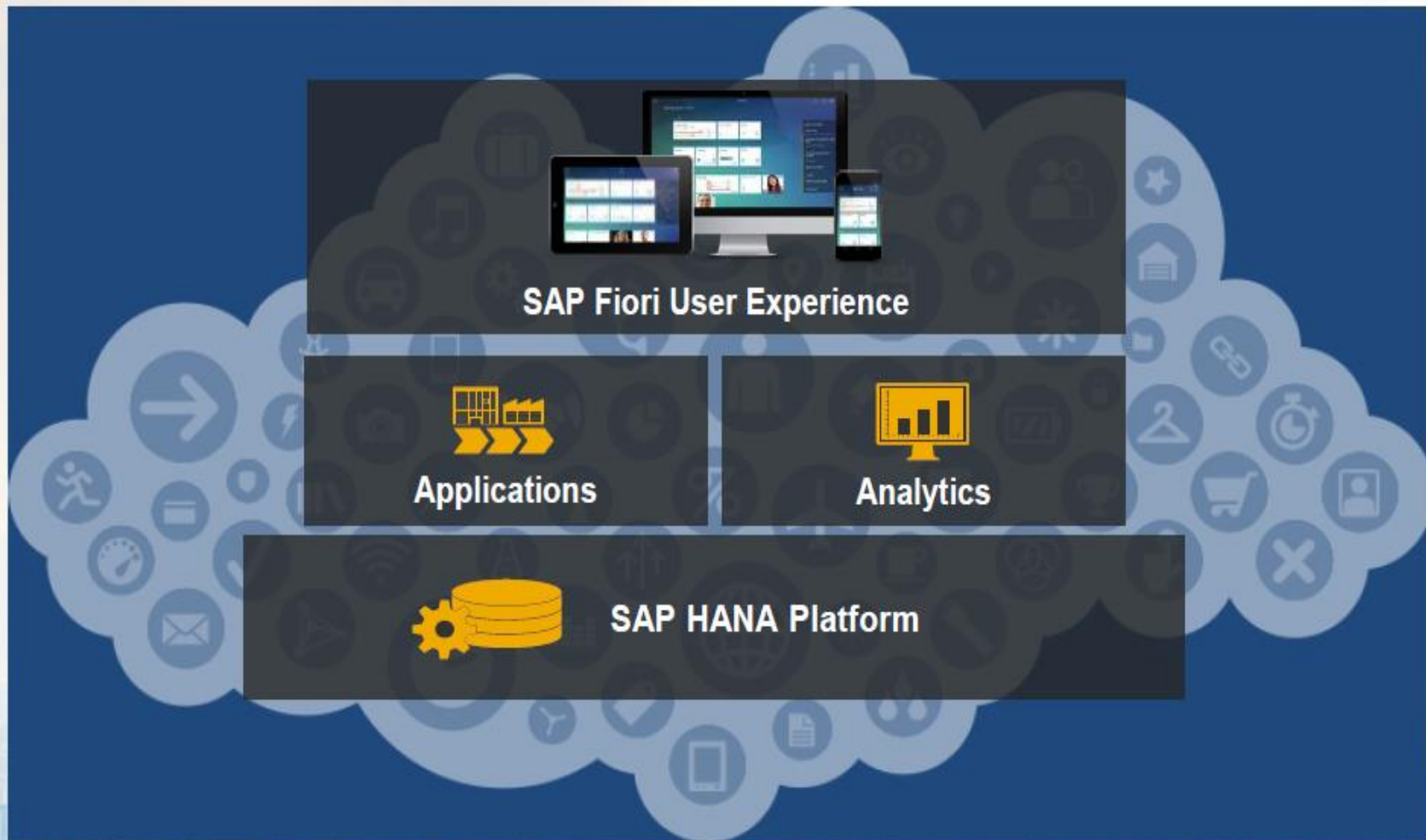


Make Experience **Coherent** Across the Enterprise



UNIFIED UX DIRECTION FOR ALL SAP SOFTWARE

ALL APPLICATIONS & UI TECHNOLOGIES TO CONVERGE TO THE SAP FIORI UX



Cienci
Soluções Inteligentes

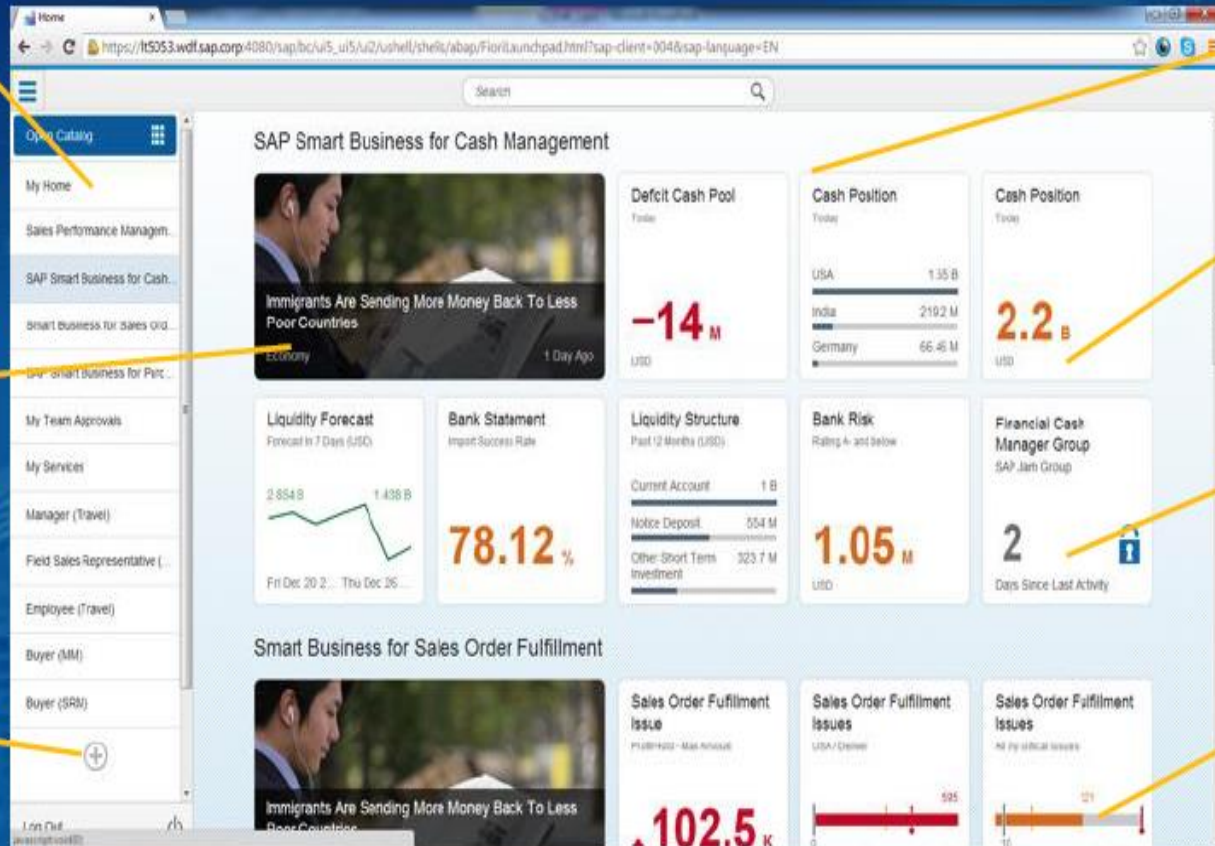
Fiori Launchpad

One entry point for the user

Role based with one common role definition

News and feeds to enhance collaboration

Group tiles for personalized content organization



Search across and within apps to get immediate answers

Color coding alerts user for any overdue, new or immediate actions

SAP Jam integrated to provide instant feedback on notifications and group activity

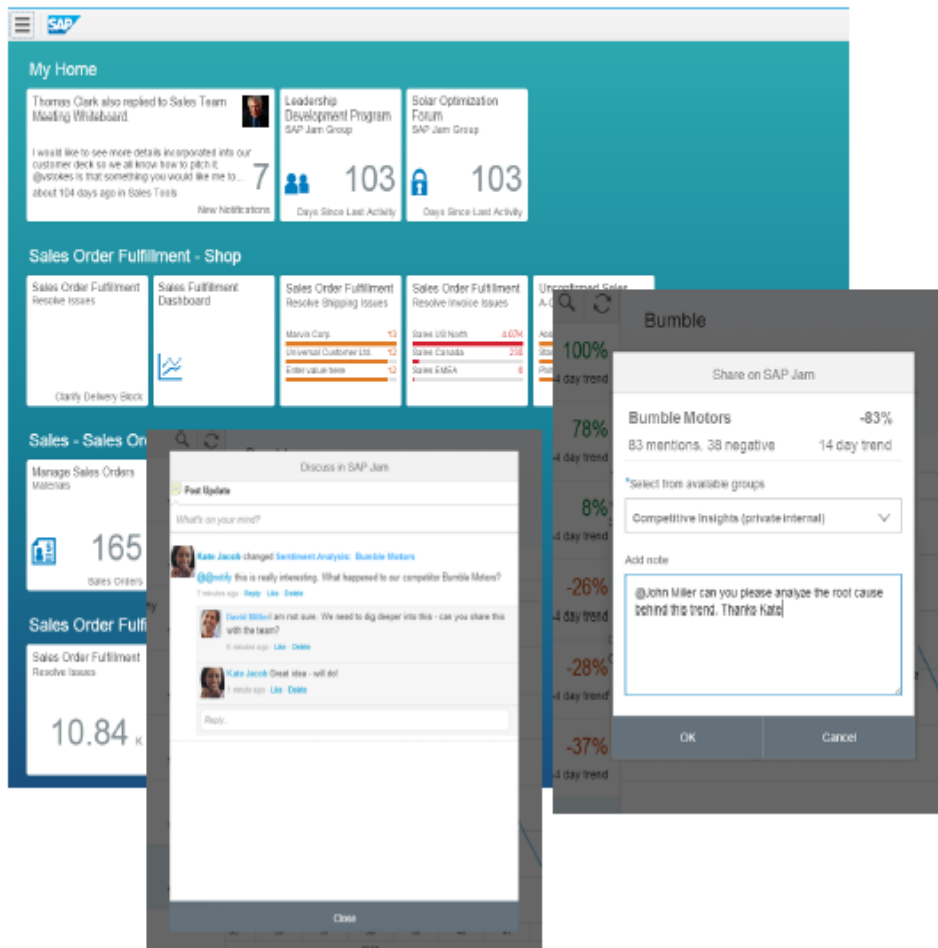
Dynamic charts to provide high level, real-time overview



Cienci
Soluções Inteligentes

Collaborate within SAP Fiori and Increase Productivity

Collaborate Seamlessly with Co-Workers Internally and Externally*



Capabilities:

- Display notifications in Launchpad
- SAP Jam Group shortcuts in Launchpad
- Share link, attachments, and notes in SAP Jam integrated in SAP Fiori Factsheets, SAP Smart Business Apps and many transactional apps

Benefits

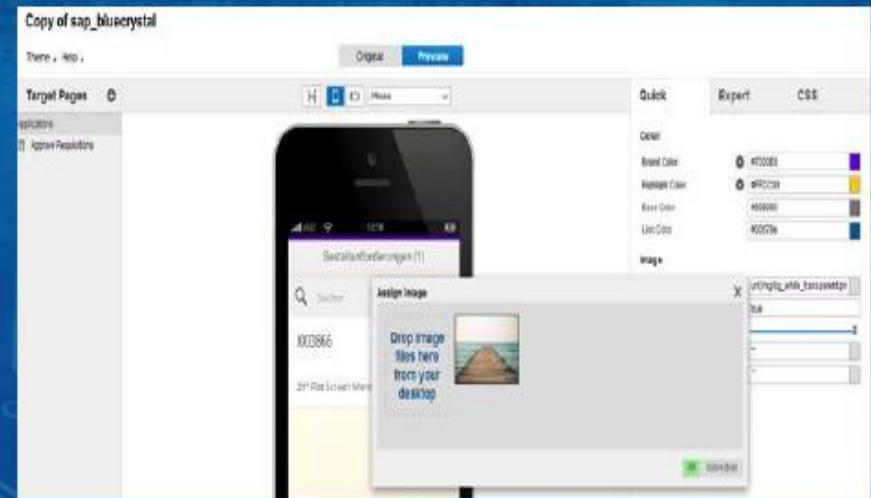
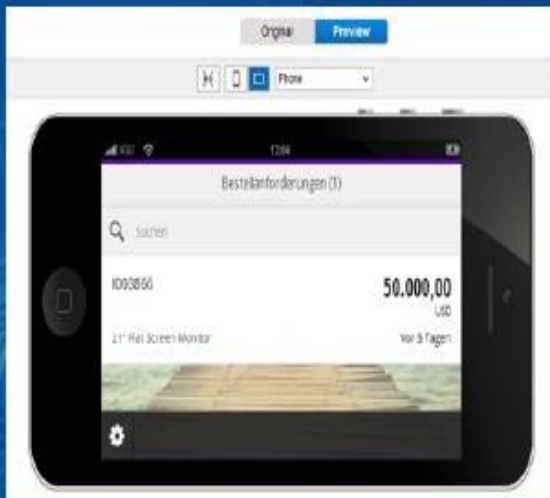
- Discuss in context - quick, informal communication on any device
- Informal and ad-hoc discussions, complemented by tools for planning and decision making

*requires additional SAP Jam Enterprise License

UI Theme Designer

Easy modification of the theme

- Easy CSS-free theming/branding as long as mainly colors need to be changed
- Live preview in real applications
- Other SAP UI technologies like Web Dynpro are also covered



SAP Fiori

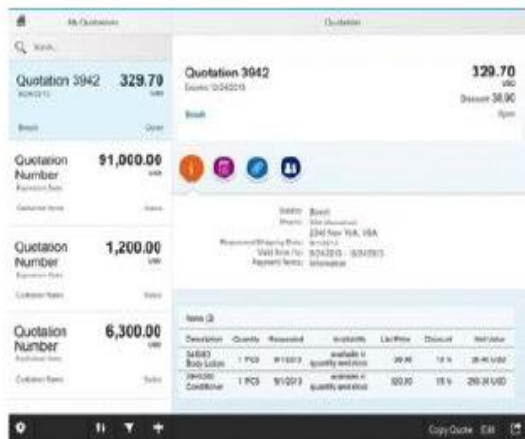
App Types

Transactional



Task-based Access

Access to tasks like change, create, or approve processes with guided navigation



Run on:



- Exceptions apply for Financials and MRP
- Selected apps were downported

Analytical



Insights

Visual overview of a dedicated topic for further KPI related analyses



Run on:



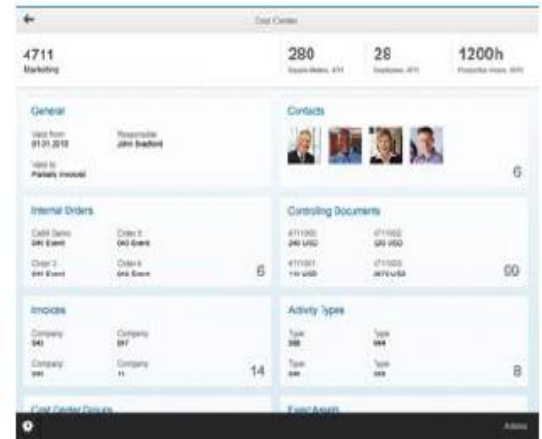
For SAP Smart Business, consider «HANA side car» approach as long as you are not running Suite on HANA

Factsheet



Search and Explore

View essential information about objects and contextual navigation between related objects



Run on:

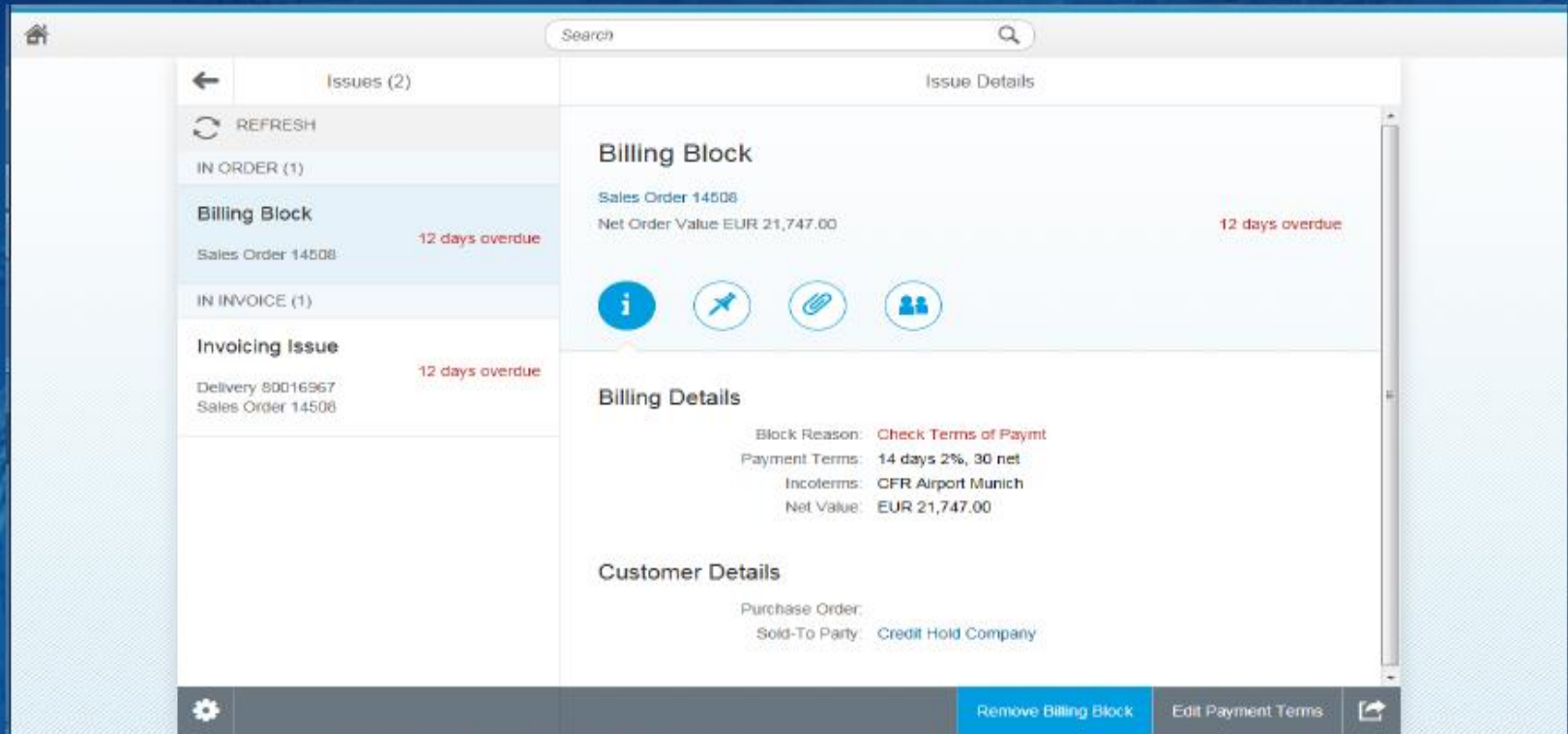


Cienci
Soluções Inteligentes

SAP Fiori app types

Transactional

- These apps let you perform transactional tasks, such as creating a leave request for an employee.
- They represent simplified views and interaction with existing business processes and solutions.



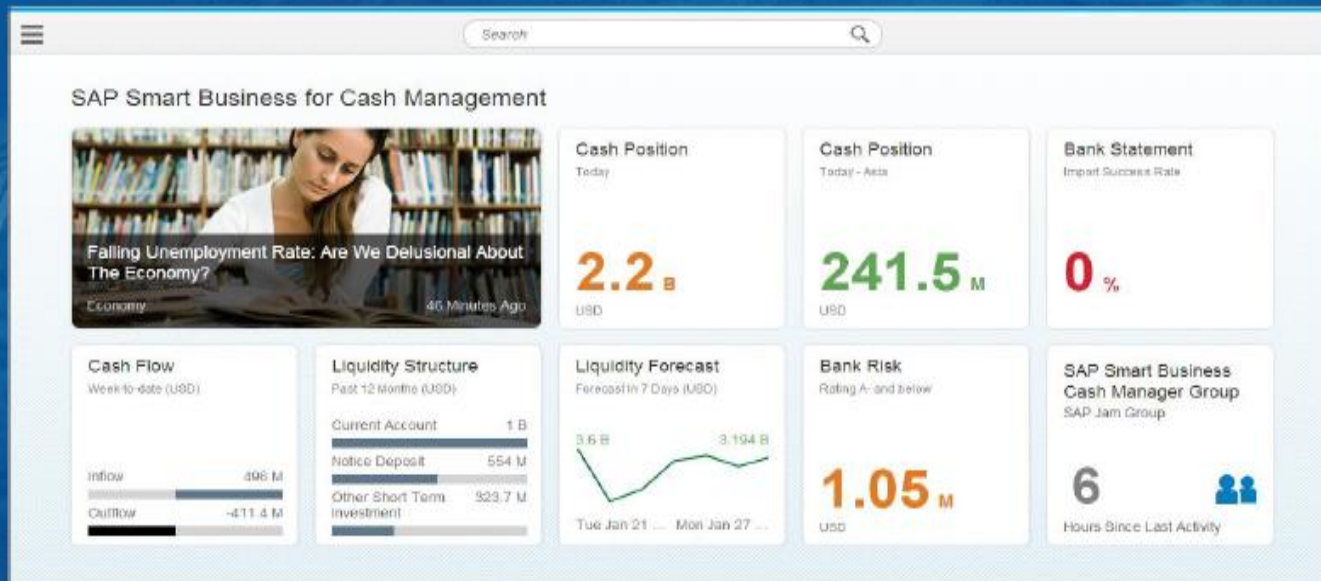
Sales Order Fulfillment App



SAP Fiori app types

Analytical & Smart Business

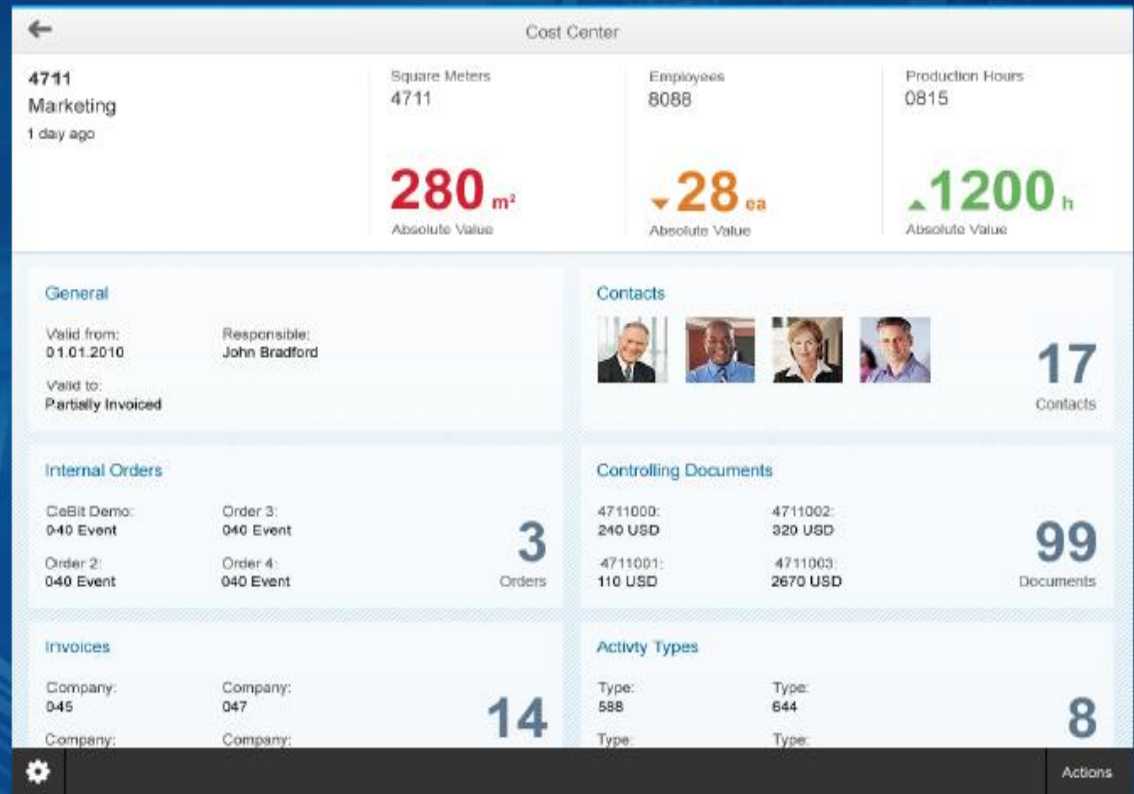
- Get a role-based insight into real-time operations of your business by collecting and displaying key figures directly in your browser.
- They can be SAP Smart Business applications but can also be other analytical, predictive, and planning applications.
- Analytical apps combine the data and analytical power of SAP HANA with the integration and interface components of SAP Business Suite. It provide real-time information on large volume data in a simplified front end for enterprise control.
- With SAP Smart Business, you can closely monitor your most important key performance indicators (KPIs) in real time and react immediately on changes in market conditions or operations.



SAP Fiori app types

Fact Sheets

- These apps display contextual information about central objects used in your business operations.
- Fact sheets are designed to be intuitive and harmonized. From a fact sheet area (tile), you can drill down into its details. You can easily navigate from one fact sheet to its related fact sheets.
For example, you can navigate from a document to the related business partner or to the master data.
- From fact sheets, you can also access related transactions in operational systems.



SAP Fiori Apps – Today

Across Lines of Business

¥\$€ Finance **190+**

Manufacturing **30+**

Finance & Budget **10+**

Human Resources **10+**

Supply Chain **80+**

Merchandising **10+**

Sales & Marketing **30+**

R&D, Engineering **30+**

Operations **10+**

Procurement **30+**

Asset Management **10**

Additional LoBs **30+**

SAP Fiori Apps on Any DB Today

Across lines of business and industries

Finance



Finance

- MySpend

Travel

- Approve Travel Expenses
- Approve Travel Requests
- My Travel Requests

Human Resources



Human Capital Management

- Approve Leave Requests
- Approve Timesheets
- My Benefits
- My Leave Requests
- My Paystubs
- My Timesheet

R&D, Engineering

Project Management

- Approve Decision Points
- Change Portfolio Items
- Confirm Project Tasks
- Create Portfolio Item Proposals
- Change Network Activity Status
- Change WBS Element Status
- Confirm Network Activity
- Confirm Project Milestone

Manufacturing



Quality Management

- My Quality Tasks
- Report Quality Issue

Production Planning

- Confirm Production Operations
- Confirm Production Orders
- Release Production Order Operations
- Release Production Orders

Sales & Marketing



- My Accounts
- My Appointments
- My Contacts
- My Leads
- My Notes
- My Opportunities
- My Tasks
- Simulate Sales Pipeline
- Track Sales Pipeline
- Check Price and Availability
- Create Sales Orders
- Customer Invoices
- My Quotations
- Change Sales Orders
- Track Sales Orders
- Track Shipments

Asset Management

- Production Worker (EHS*)
- Foreman (EHS*)

Procurement



- Approve Purchase Contracts
- Approve Purchase Orders
- Approve Requisitions
- Track Purchase Order
- Approve Supplier Invoices
- Approve Service Entry Sheets
- My Purchasing Document Items
- Approve Purchase Orders (SRM)
- Approve Shopping Carts
- Track Shopping Carts

Industries

Retail

- Adjust Stock
- Look Up Retail Products
- Approve Trading Contract

Insurance

- Workload Management - Claims
- Workload Management - Tasks

Higher Education

- My Courses
- My Results

Cross LoB



Compliance

- Access Approver
- Board Risk Report
- Check Request Status
- Compliance Approver
- Request Access
- Request Access for Others

Data Archiving

- Analyze Archiving Variants Distribution
- Manage Data Aging Groups
- Monitor Archiving Jobs
- Monitor Data Aging Objects

Approval

- Approve Request

Test Data Management

- Manage TDMS Execution

Master Data Management

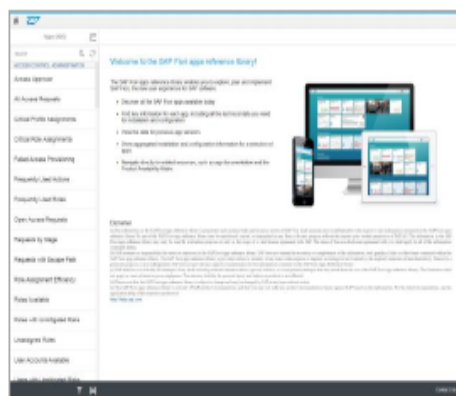
- Request Material
- Request Business Partner
- Request Cost Center
- Request Customer
- Request Profit Center
- Request Supplier
- Track My Request

*SAP Environmental Health and Safety Management



Cienci
Soluções Inteligentes

Overview of SAP Roadmap for SAP Fiori Innovations*



Fiori apps reference library

Solution today



Planned innovations

* for information on S/4HANA, please refer to the S/4HANA road map.

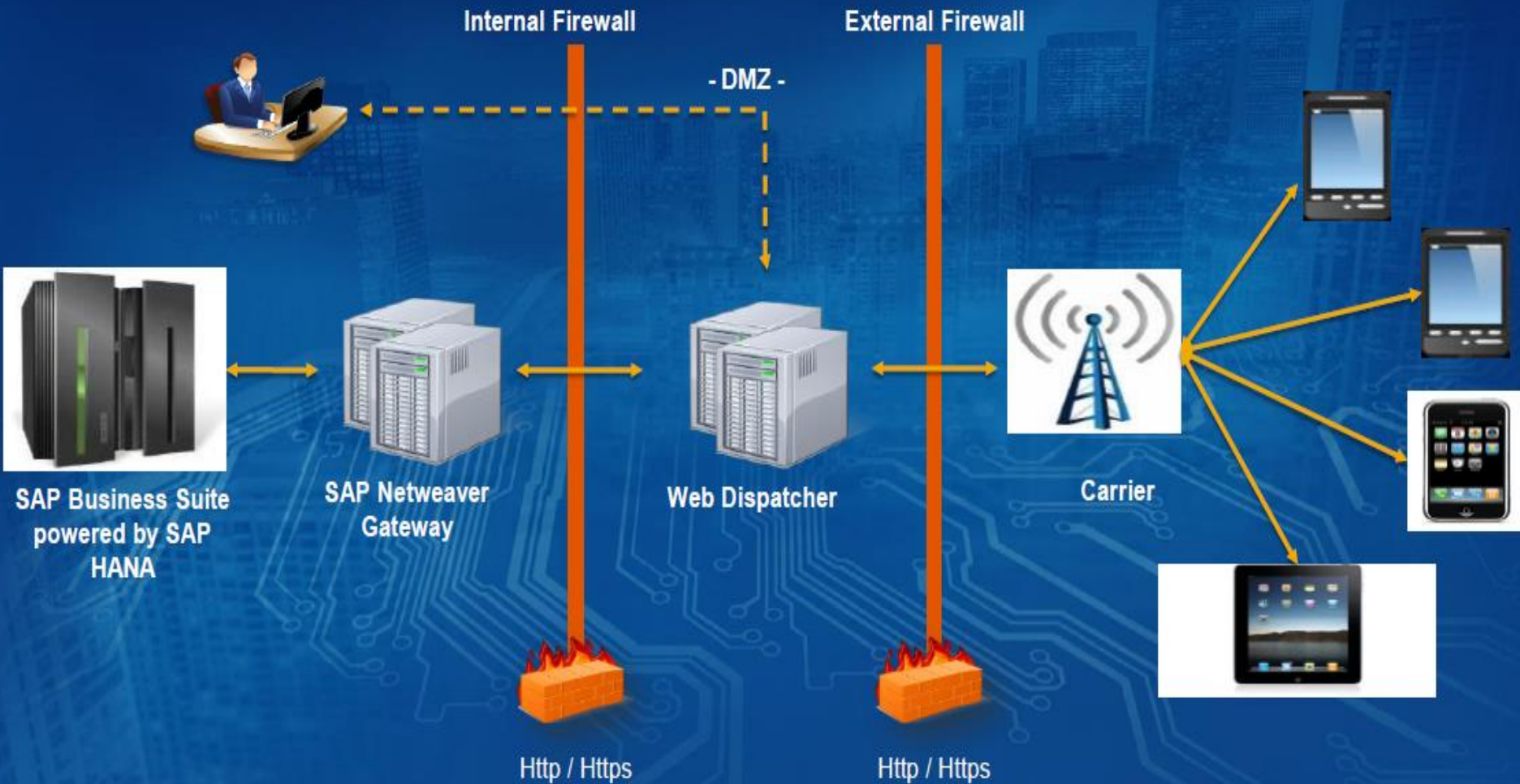
This is the current state of planning and may be changed by SAP at any time.



Cienci
Soluções Inteligentes

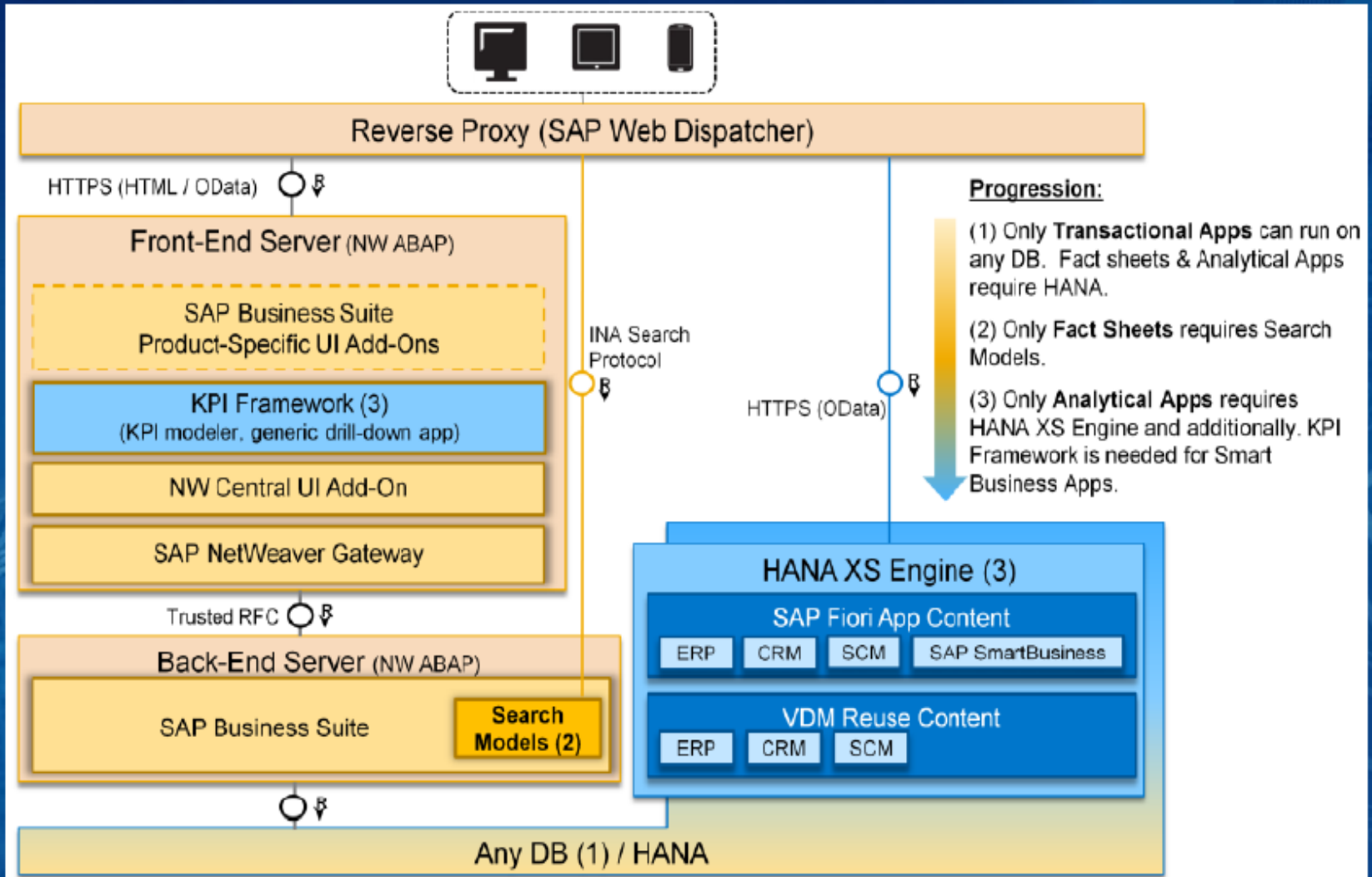
SAP Fiori Architecture

Typical Landscape

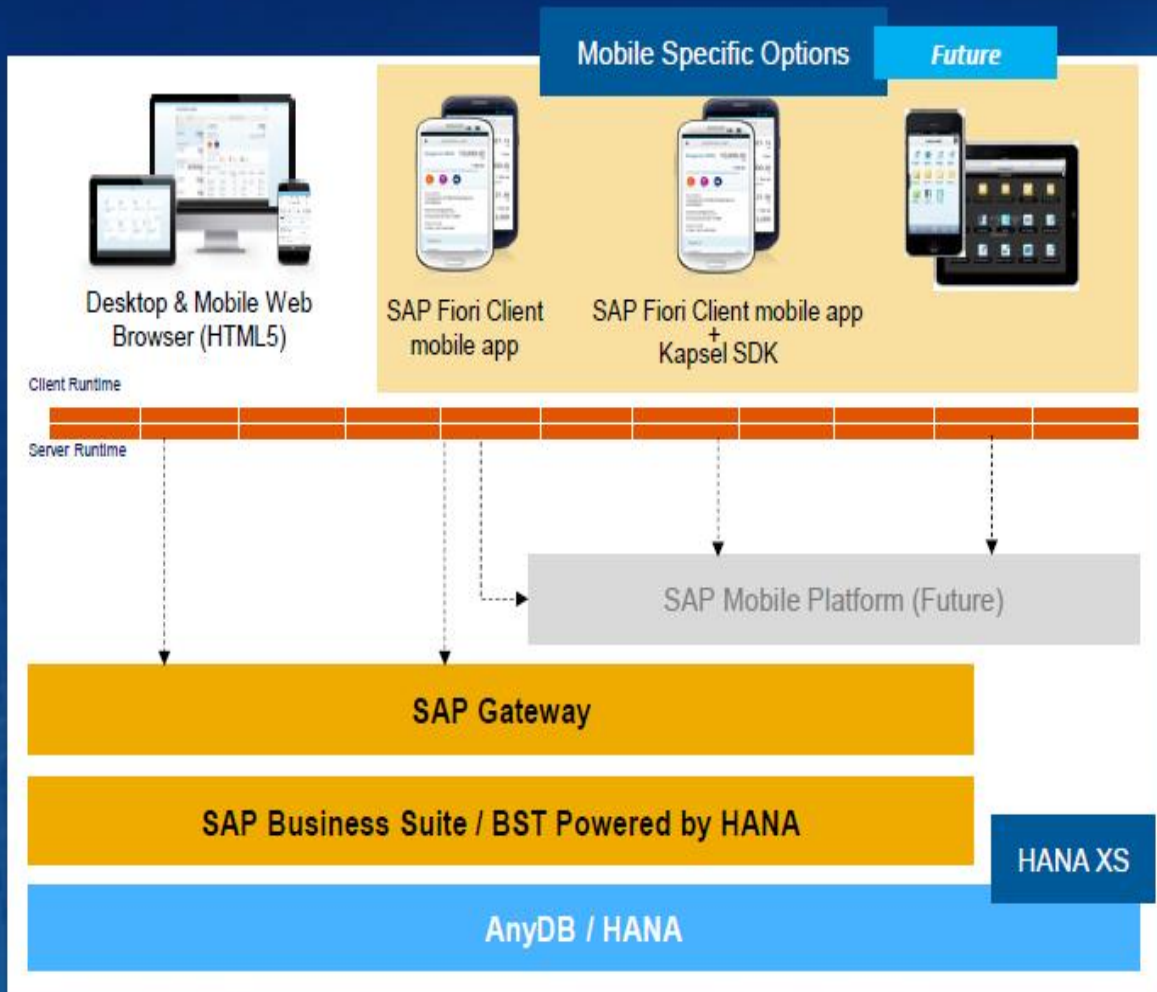


SAP Fiori Architecture

Logical Overview



SAP Fiori Consumption Channel Roadmap



- **Desktop & Mobile Web Browser (HTML5)**
- **SAP Fiori Client mobile app**
 - Improves caching, life cycle management, etc. (SMP optional)

Future Enhancement with SAP Mobile Platform (SMP) 3.0 optimized for deployment in enterprise infrastructure

- **SAP Fiori Client mobile app**
 - Native device capabilities
 - Foundation for Offline access, push notifications and additional security
- **Hybrid Web Container (Future)**
 - Leverage third-party native container to run SAP Fiori via SAP Mobile Platform



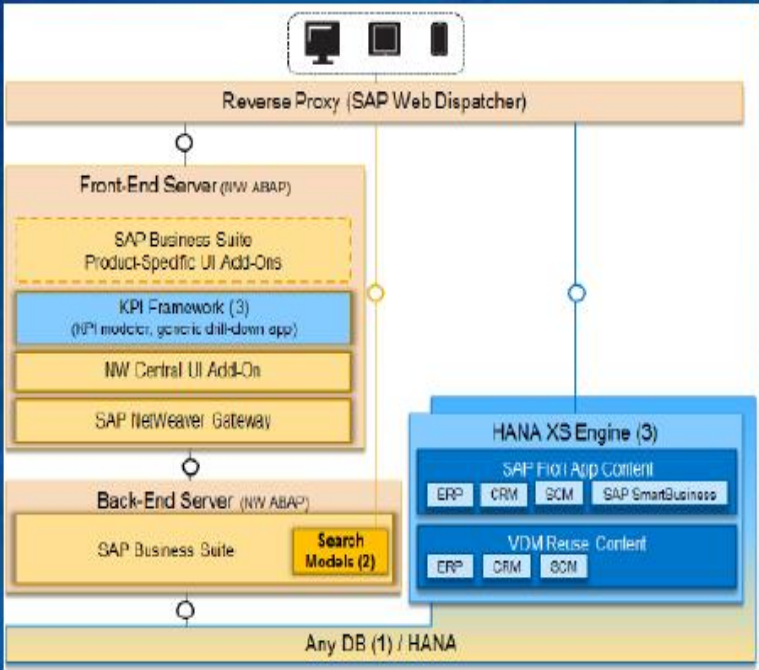
SAP Fiori Installation

Concepts of Add-Ons, Support Packs & NetWeaver Gateway

- The Central UI Add-On contains the SAP UI5 control library and the SAP Fiori Launchpad
- The product-specific UI Add-Ons contain the UI developments of the respective Business Suite product, such as ERP-FIN, ERP-SD, ERP-MM, CRM or SCM
- The SAP NetWeaver Gateway is a development framework, which offers development and generation tool to create OData services to a variety of client development tools. It establishes a connection between SAP Business Suite data and target clients, platforms, and programming framework
- SAP Fiori Support Packs contains new apps released as well as bugs/fixes for existing apps

SAP Fiori Extensibility

SAP Fiori applications can be extended by enhancing one or multiple content layers, depending on the extension requirements and the application type.



Content Layer	When an Extension is Required	Relevance
UI	The back-end logic and content required for the app extension exists in the Gateway layer, but is not exposed in the app's UI.	Transactional Analytical
Gateway (OData)	The back-end logic and content required for the app extension exists in the Business Suite layer, but is not exposed in the app's Gateway service.	Transactional Analytical
HANA	The back-end content required for the app extension exists in the HANA models, but is not exposed in the app's OData service.	Analytical
Business Suite	The back-end logic and content required for the application enhancement does not exist in the Business Suite.	Transactional
Search Model	The back-end logic is not exposed in the application's Gateway service.	Factsheets

SAP Fiori Demo: www.sap.com/fiori-demo

SAP Fiori, Demo Cloud EditionDemo User ▾

Welcome



Delight Business Users with a Personalized User Experience

Customize and Extend

Easily customize your apps and more!



CRM

My Opportunities

New



My Accounts

New



My Leads

New



Simulate Sales Pipeline

New





Product Information and Resources

SAP Fiori Page

<http://www.sap.com/fiori>

SAP UX Strategy

<http://experience.sap.com/ux-strategy/>

SAP Fiori Apps Reference Library

<http://www.sap.com/fiori-apps-library>

Help.sap.com

<http://help.sap.com/fiori>

Contatos

Roger Ghion Holovatiuk
SÓCIO-DIRETOR

Fone: +55 (11) 98224-4370
Email: roger.holovatiuk@cienci.com.br

Jonas Vieira
GERENTE SAP

Fone: +55 (11) 98699-0886
Email: jonas.vieira@cienci.com.br



[Cienci Soluções Inteligentes](https://www.linkedin.com/company/cienci-solucoes-inteligentes)



[@cienci](https://twitter.com/cienci)



www.cienci.com.br



Cienci
Soluções Inteligentes

Localização



Cienci Soluções Inteligentes

Rua Verbo Divino, 2001, 14º Andar

Espaço Empresarial Nações Unidas

Chácara Santo Antônio - São Paulo – SP

Tel.: +55 (11) 2305 – 5370 / 2296 – 1797



Número DUNS - 914644588

[Relatório Cienci](#)



Cienci
Soluções Inteligentes

OBRIGADO!!!

Rua Verbo Divino, 2001, 14º Andar
Espaço Empresarial Nações Unidas
Chácara Santo Antônio - São Paulo – SP
Tel.: +55 (11) 2296 - 1797 / 4111-1962



Cienci
Soluções Inteligentes